

SS 2021 KEY
COLOUR
DIRECTIONS

THE ESSENTIAL COLOUR DIRECTIONS
FROM THE SS21 COLLECTIONS





**HAVE CONFIDENCE IN YOUR COLOUR
SELECTIONS WITH OUR KEY CATWALKS TRENDS.**

**THESE ARE THE NOTEWORTHY KEY TRENDS
NOT TO BE MISSED FOR THE LUXURY,
PREMIUM & FAST FASHION CONSUMER.**

**SO IF YOU ARE CURRENTLY WORKING ON SPRING
SUMMER 2022 OR JUST ABOUT TO START THEN THESE
LOOKS WILL INSPIRE YOU FOR YOUR NEW
SEASON DEVELOPMENT.**

BE CONFIDENTLY INSPIRED.



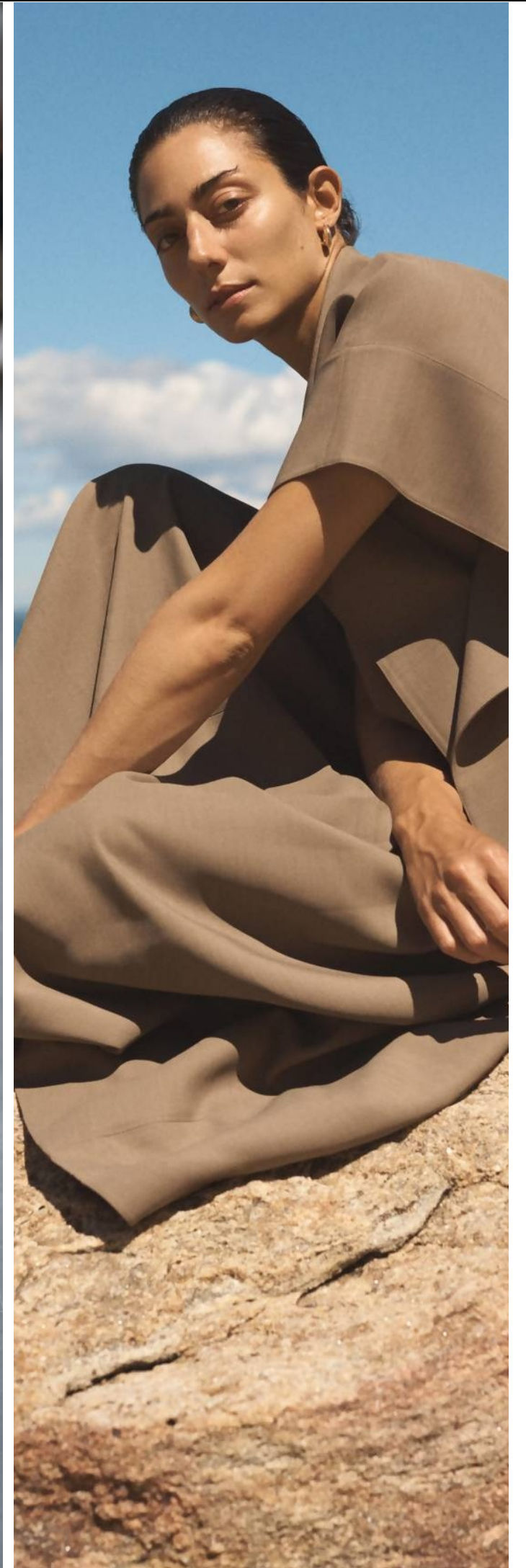






















VINTAGE ALMOND & KELLY POP GREEN



SOFT MASCULINE VINTAGE SHADES

